

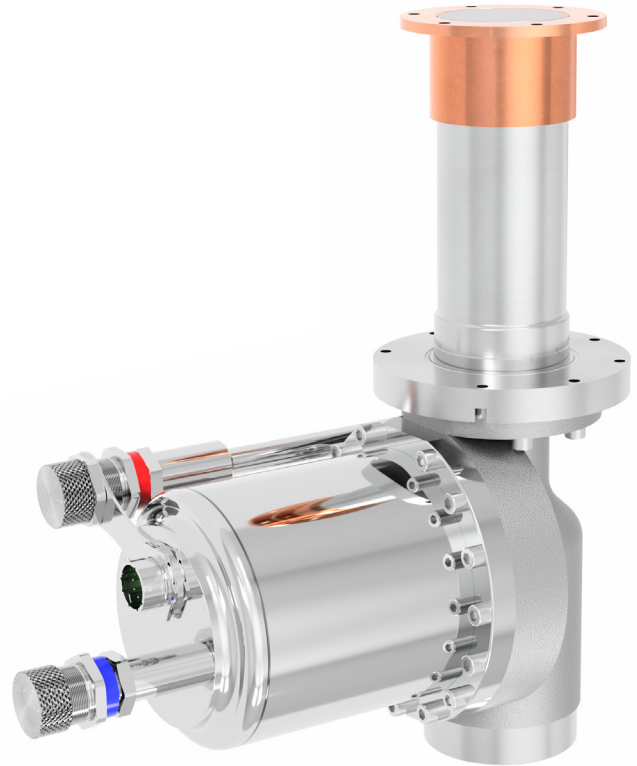
Features

- 15,000-hour recommended maintenance interval
- Only five moving parts in the coldhead
- Fully field serviceable – no special tools required for disassembly
- Operation on 50- and 60-Hz power
- 18-month limited warranty

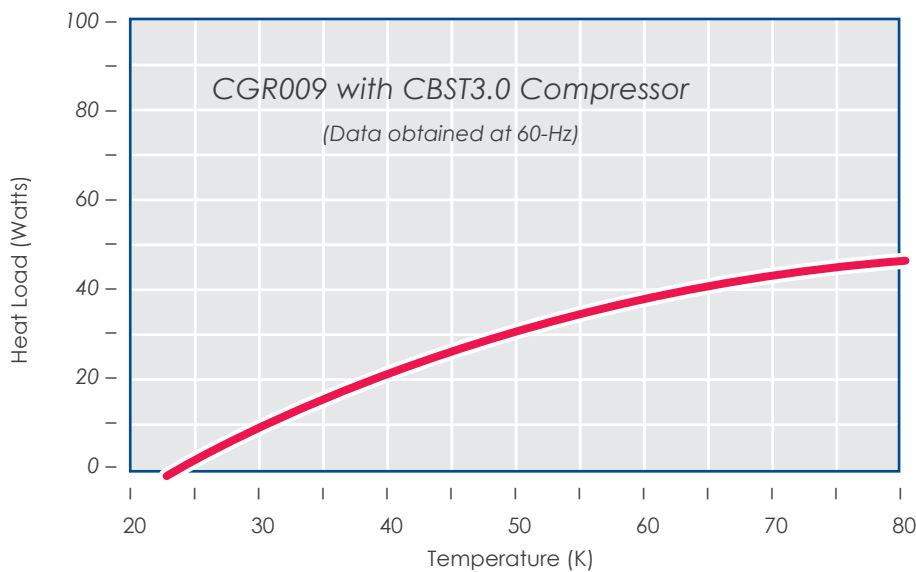
Specifications

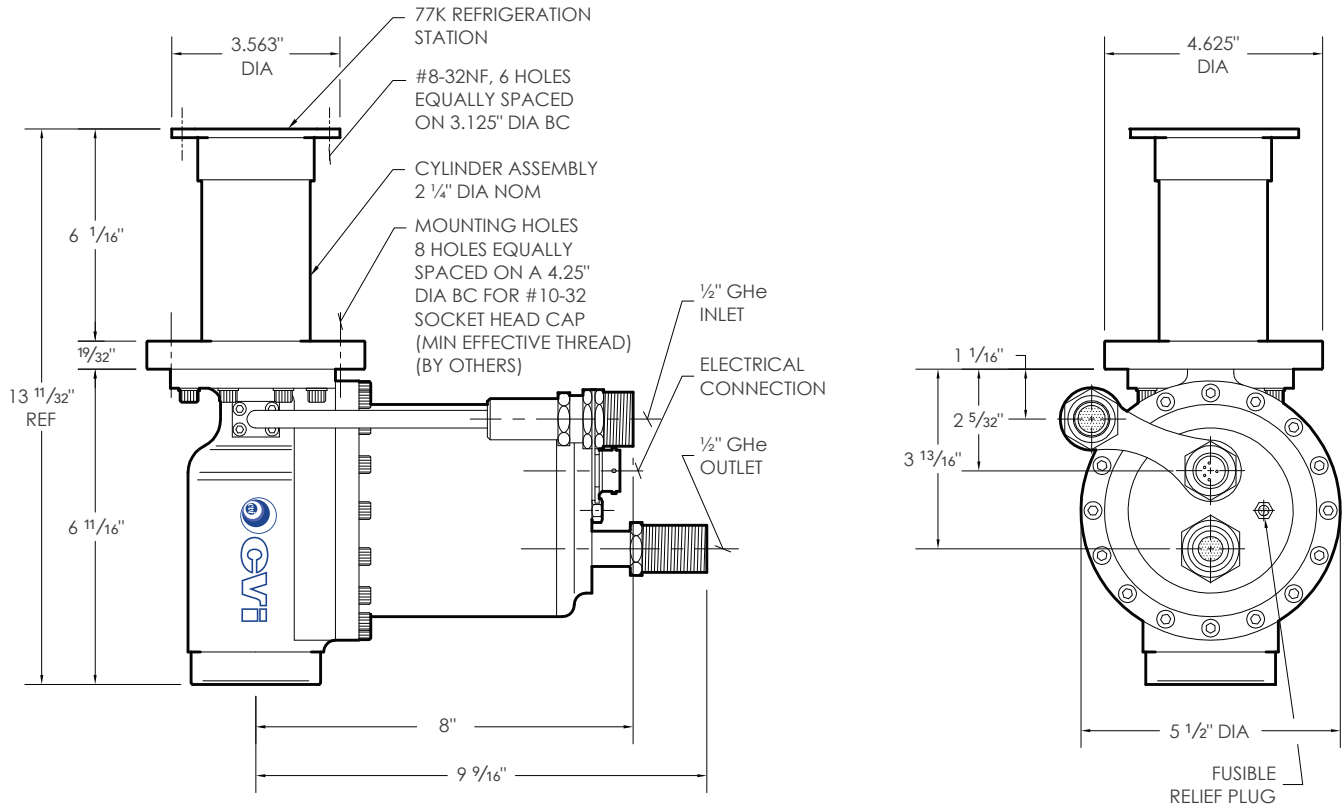
Refrigeration Capacity	46 Watts at 77K
w/CBST3.0 Compressor	0 Watts at 23K
Operating Range	23K - 300K
Temperature Stability	±0.5K
without Load	
Frequency of Operation	72 cpm (1.20 Hz)
Operating Orientation	Any
Cooler Weight	21.5 lbs (9.7 kg)

(Performance data based on 60-Hz operation)



Single-Stage Refrigeration Performance





Interfaces

System Flange	OD	BC	Bolt Holes
304 Stainless	4.625"	4.25"	8 equally spaced @ $13/64$ "
Recommended O-Ring groove placement on user system flange: 3.749"/3.739" ID × 0.083"/0.088" WD × 0.054"/0.050" DP			
Cold Flange	OD	BC	Bolt Holes
OFE Copper	3.563"	3.125"	6 equally spaced for #8-32NF
Allow 3.50" hole in system flange for refrigeration station insertion			

CGR009
Single-Stage