

Features

- 15,000-hour recommended maintenance interval
- Only five moving parts in the coldhead
- Fully field serviceable – no special tools required for disc
- Operation on 50- and 60-Hz power
- 18-month limited warranty

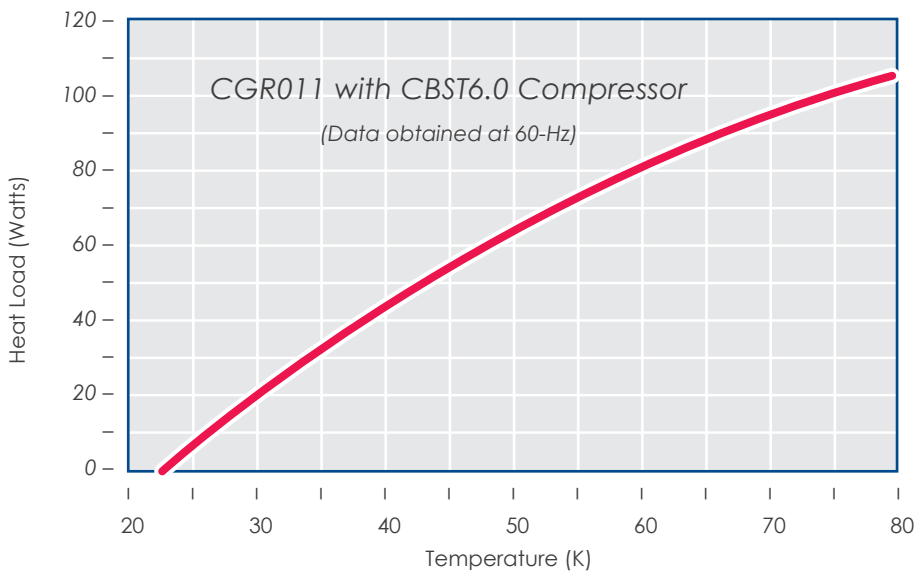
Specifications

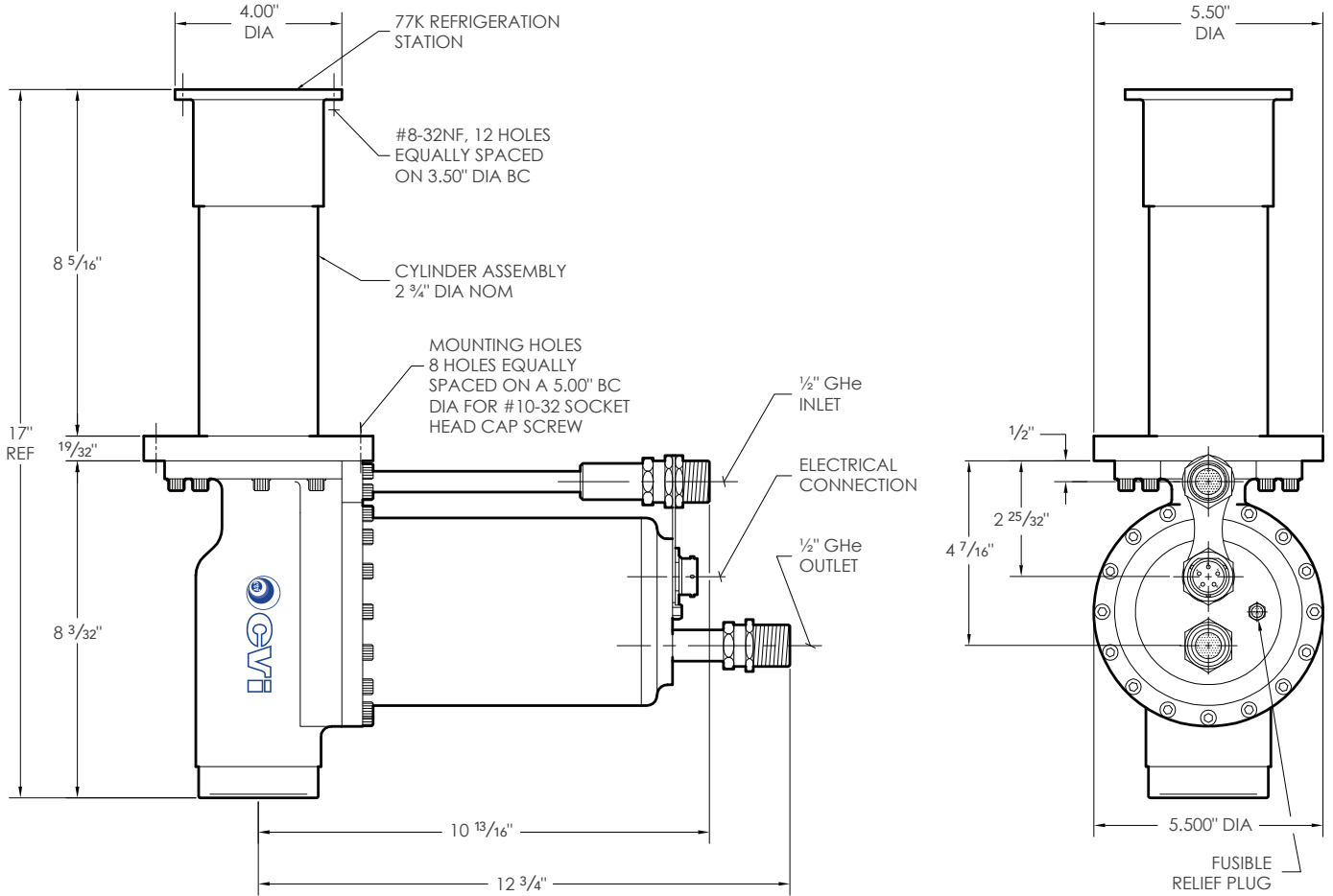
Refrigeration Capacity w/CBST6.0 Compressor	100 Watts at 77K 0 Watts at 23K
Operating Range	23K - 300K
Temperature Stability without Load	±0.5K
Frequency of Operation	72 cpm (1.20 Hz)
Operating Orientation	Any
Cooler Weight	35.5 lbs (16.1 kg)

(Performance data based on 60-Hz operation)



Single-Stage Refrigeration Performance





Interfaces

System Flange	OD	BC	Bolt Holes
304 Stainless	5.50"	5.0"	8 equally spaced @ $\frac{13}{64}$ "
Recommended O-Ring groove placement on user system flange: 4.281"/4.231" ID × 0.083"/0.088" WD × 0.054"/0.050" DP			
Cold Flange	OD	BC	Bolt Holes
OFE Copper	4.00"	3.50"	12 equally spaced for #8-32NF
Allow 4.031" hole in system flange for refrigeration station insertion			

CGR011
Single-Stage