

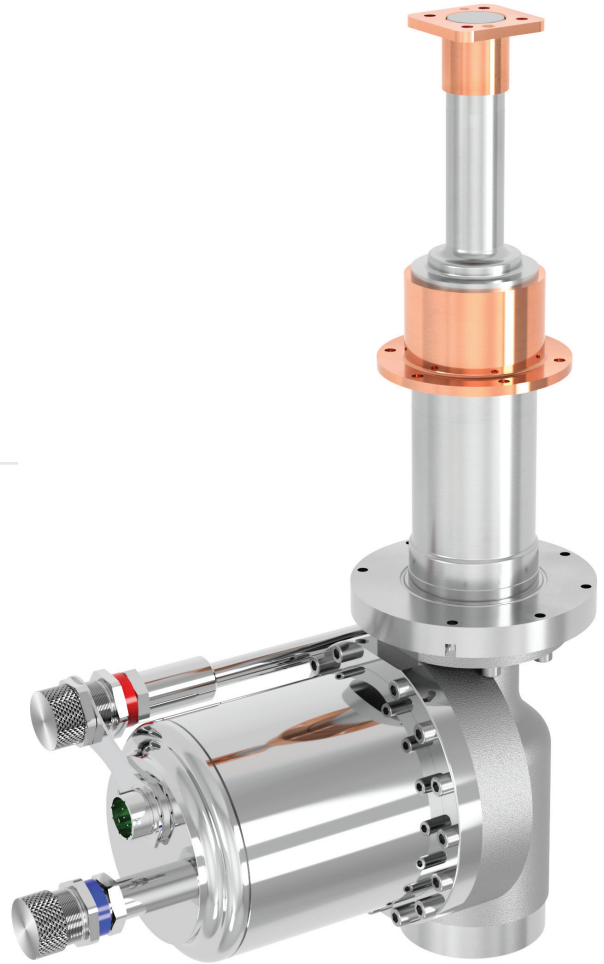
Features

- 15,000-hour recommended maintenance interval
- Only six moving parts in the coldhead
- Fully field serviceable – no special tools required for disassembly
- Operation on 50- and 60-Hz power
- 18-month limited warranty

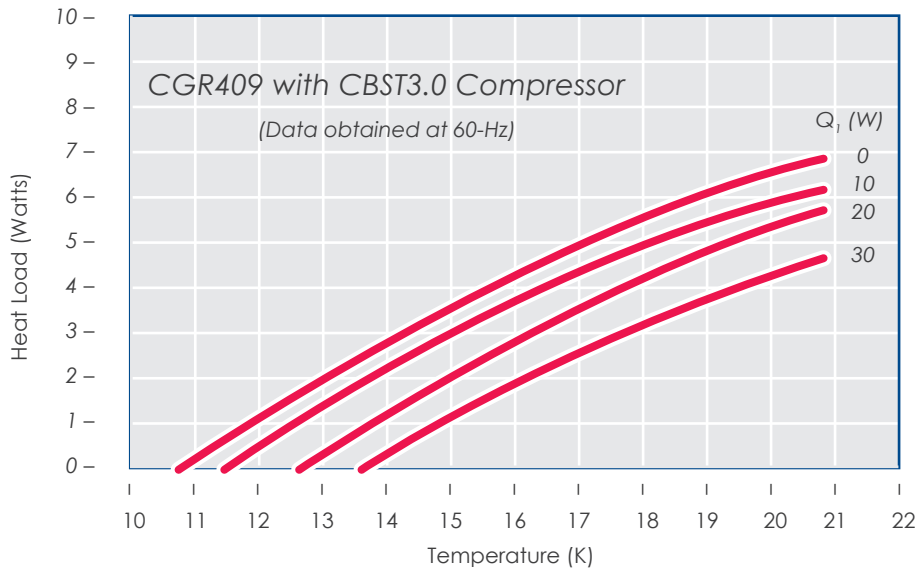
Specifications

Refrigeration Capacity w/CBST3.0 Compressor	30 Watts at 77K – First Stage 6 Watts at 20K – Second Stage <i>(Values are not simultaneous refrigeration)</i>
Operating Range	11K - 300K
Temperature Stability without Load	±0.5K
Frequency of Operation	72 cpm (1.20 Hz)
Operating Orientation	Any
Cooler Weight	24.5 lbs (11.1 kg)

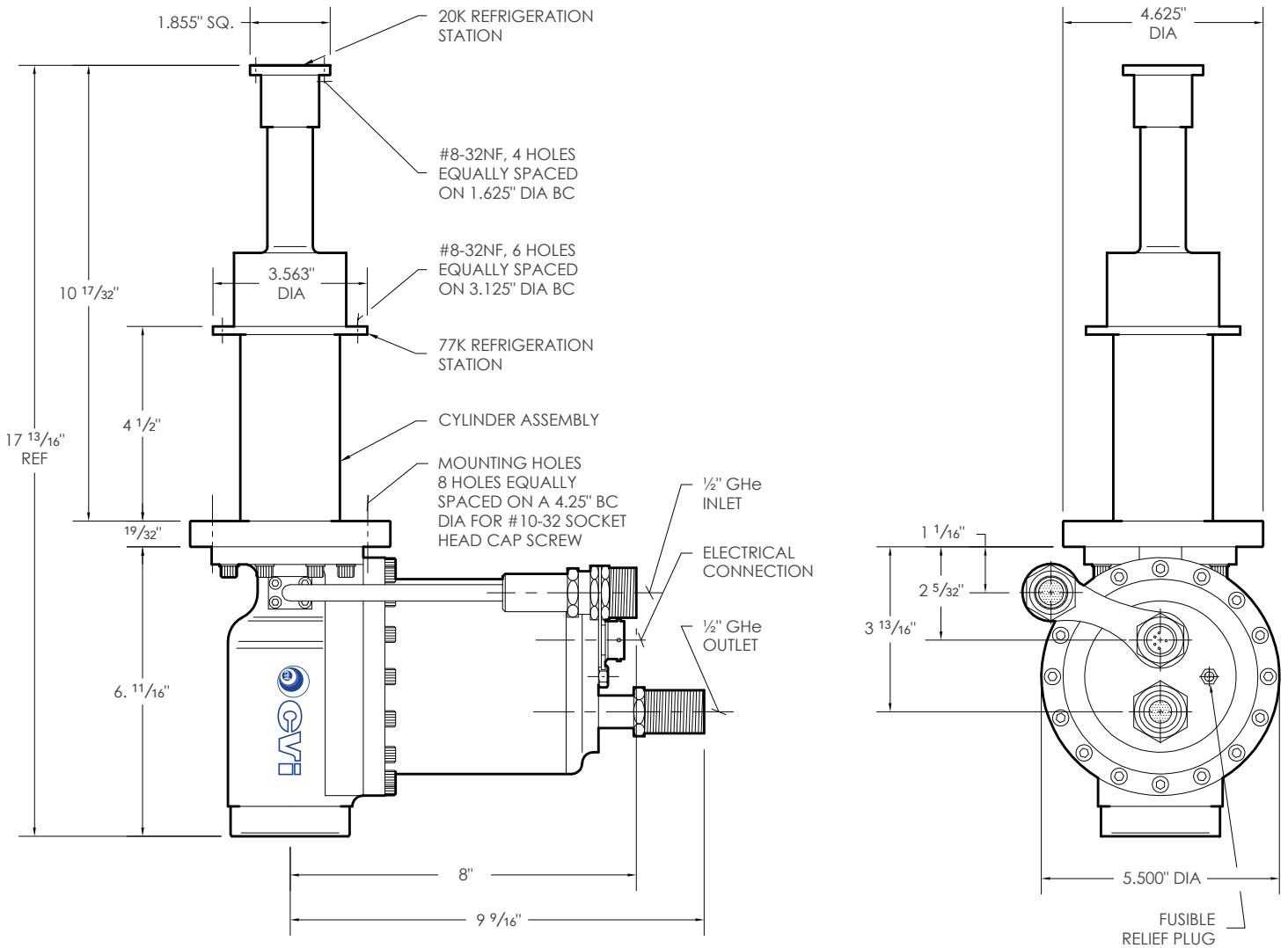
(Performance data based on 60-Hz operation)



Two-Stage Refrigeration Performance



(Second stage refrigeration capacity as a function of first stage heat load)



Interfaces

System Flange	OD	BC	Bolt Holes	Material
	4.625"	4.25"	8 equally spaced @ 13/64"	304 Stainless
Recommended O-Ring groove placement on user system flange: 3.749"/3.739" ID × 0.083"/0.088" WD × 0.054"/0.050" DP				
Cold Flange	OD	BC	Bolt Holes	Material
First Stage	3.563"	3.125"	6 equally spaced for #8-32NF	OFE Copper
Second Stage	1.855" sq.	1.625"	4 equally spaced @ 13/64"	OFE Copper
Allow 3.625" hole in system flange for refrigeration station insertion				

CGR409
Two-Stage