

Specifications

Type	Pumping Speed	Capacity at 1×10^{-6} Torr
N ₂	10,500 Liters/sec.	
H ₂	13,000 Liters/sec.	12 std Liters
H ₂ O	30,000 Liters/sec.	
Ar	8,500 Liters/sec.	2,200 std Liters

Weight	Crossover	Cooldown Time
180 lbs. (81.8 kg)	550 Torr Liters	210 min to 20K with CBST6.0 Compressor

Ar Throughput Capacity at 20K 10 Torr Liters/sec. 790 scc/min.

Operating Orientation Any

Purge Tube Integral

Instrumentation Silicon diode standard
Hydrogen vapor bulb
thermometer optional

(Performance data based on 60-HZ operation)



Interfaces

System Flange	OD	ID	BC	Bolt Holes	O-Ring
ANSI	27.5"	20.813"	25	20 ea 1.25" DIA	21.95" ID × 0.210" thick Viton (supplied)

Roughing Flange KF40

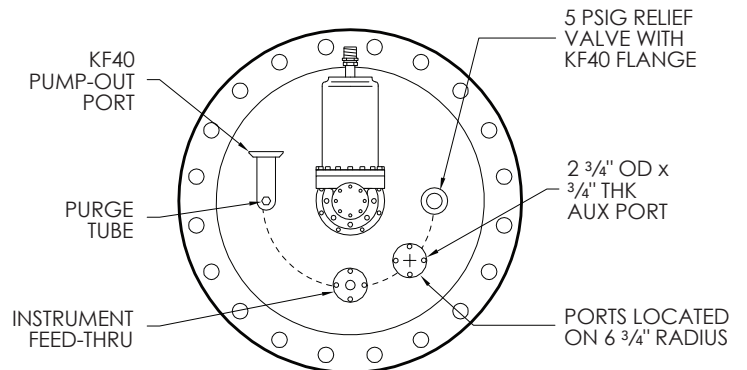
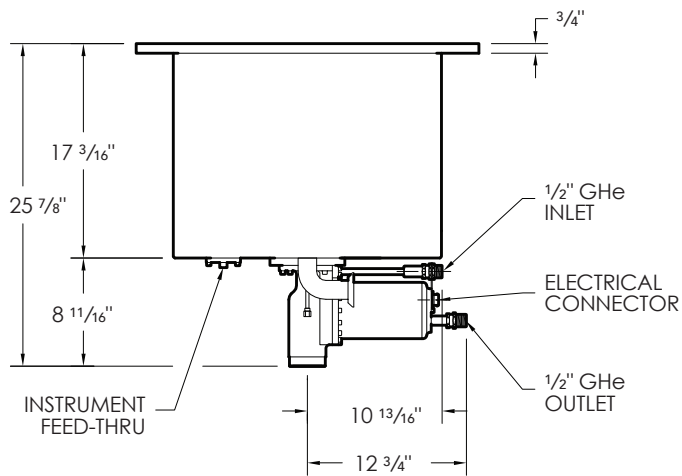
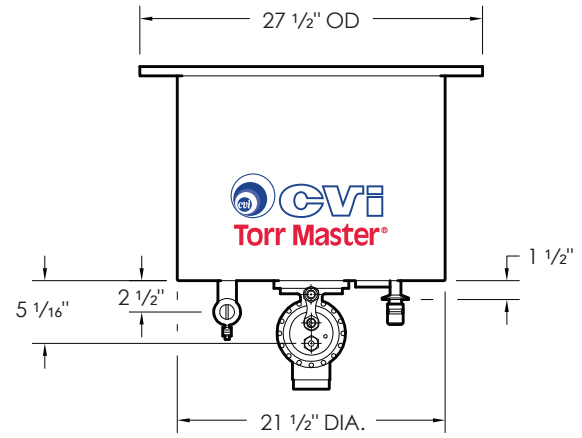
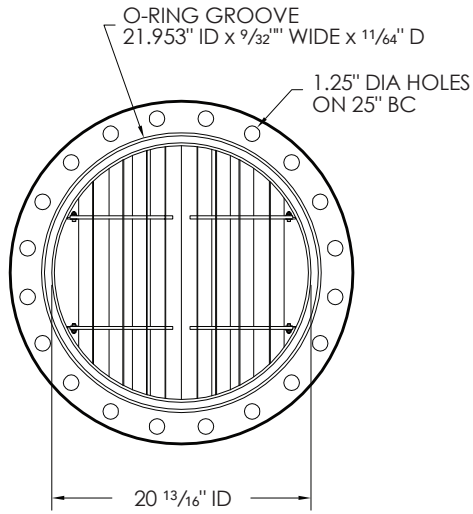
Accessory Flange 2 3/4" OD, 3/8" thick

Purge Tube 1/2" Ultra-Seal fitting, Viton O-ring
Includes blank and 0.33" bored tailpieces

Pressure Relief 5 psig poppet valve with KF40 flange

Helium Connections 1/2" Aeroquip fittings

Electrical Diode, 6-pin twist lock connector
Refrigerator drive motor, 5-pin twist lock connector



20" **TM500** (ANSI)