

Specifications

Type	Pumping Speed	Capacity at 1×10 ⁻⁶ Torr
N ₂	30,000 Liters/sec.	
H ₂	20,000 Liters/sec.	30 std Liters
H ₂ O	90,000 Liters/sec.	

Weight 950 lbs. (431 kg)
Cooldown Time 240 min to 20K
Crossover 2,000 Torr Liters at 20K
 Second Stage Temperature with H₂ Pumping Capacity

LN₂ Consumption 3 GPH steady state

Operating Orientation Any (specify when ordering)

Refrigeration Capacity with CBST6.0 Compressor and CGR511 Refrigerator
 First Stage – LN₂ Refrigerated
 Second Stage – 15 Watts at 20K

Instrumentation 2 silicon diodes on 20K charcoal box,
 1 thermocouple (Cu-Cn) on LN₂ baffle

Installation 4 equally spaced lifting lugs at the Center of Gravity

(Performance data based on 60-HZ operation)



Interfaces

		OD	ID	BC	Bolt Holes	O-Ring
System Flange	ANSI	41.75"	35.625"	38.5"	14 ea 0.875" DIA	36" ID × 0.250" thick Viton (supplied)
Roughing Flange	ANSI	6.0"	2.07"	4.75"	4 ea 0.75" DIA	2.85" ID × 0.210" thick Viton (supplied)

Accessory Flange KF40

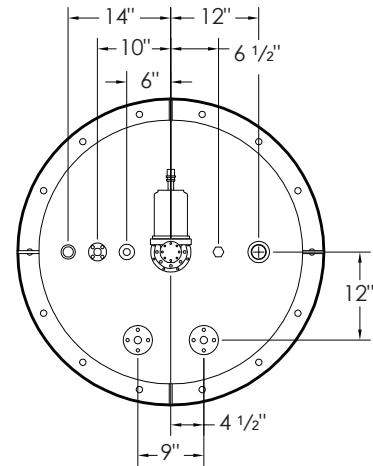
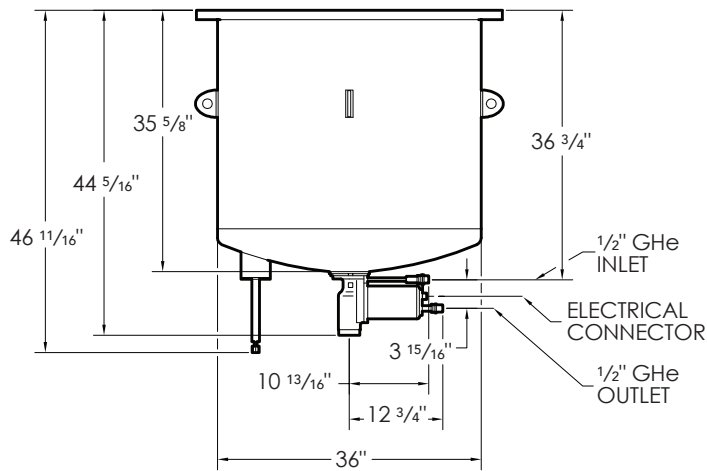
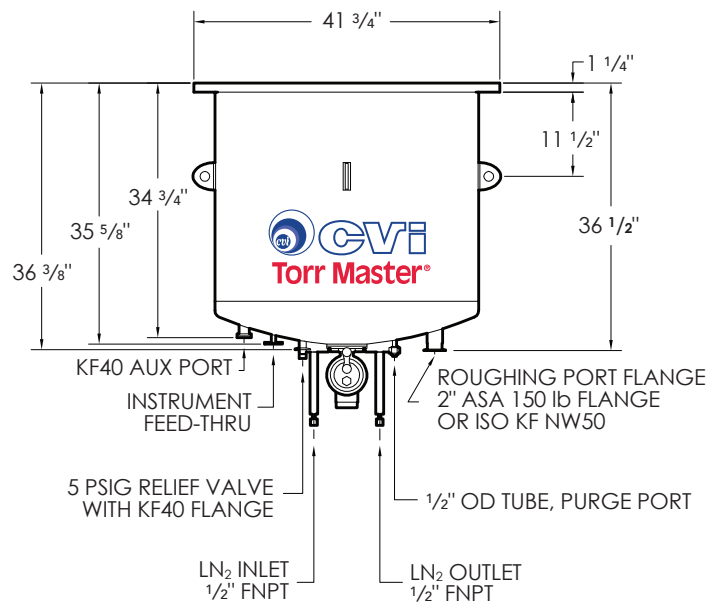
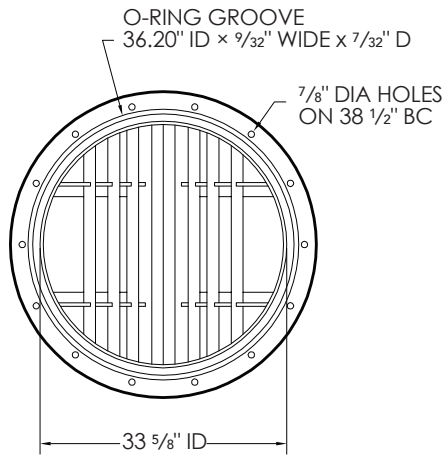
Purge Tube 0.5" VCO Viton O-ring
 Includes blank and 0.50" bored tailpieces

Pressure Relief 5 psig poppet valve with ISO KF40 flange

Helium Connections 0.5" Aeroquip fittings

Electrical 2 diodes, 1 thermocouple (Cu-Cn), 6-pin twist lock connector
 Refrigerator drive motor, 5-pin twist lock connector

Liquid Nitrogen Connections 2 ea 0.5" vacuum jacketed bayonets or
 2 ea 0.5" NPT female fittings (specify when ordering)



36" **TM900**